

=====

Acq. Operator	: JJ	Seq. Line	: 2
Acq. Instrument	: Instrument 1	Location	: P1-F-01
Injection Date	: 6/18/2021 3:53:20 PM	Inj	: 1
		Inj Volume	: 7.5 µl
Acq. Method	: C:\CHEM32\1\DATA\JONESING LABS DATA\6_18_21\2021-06-18 15-40-54 188\ACETATES.10MIN.CALIBRATED.M		
Last changed	: 6/3/2021 4:26:51 PM by JJ		
Analysis Method	: C:\CHEM32\1\METHODS\JONESING LABS METHODS\SAMPLE METHODS\ACETATES.10MIN.M		
Last changed	: 9/7/2021 4:13:39 PM by CA (modified after loading)		
Method Info	: Jonesing Labs calibration acetate method, 10min runs		

Additional Info : Peak(s) manually integrated

=====

=====

Instrument Conditions	: At Start	At Stop
Column Temp. (left)	: 30.0	30.0 °C
Column Temp. (right)	: 30.0	30.0 °C
Pressure	: 182.6	189.8 bar
Flow	: 1.750	1.750 ml/min

Detector Lamp Burn Times:	Current On-Time	Accumulated On-Time
DAD 1, UV Lamp	: 3.43	1005.5 h
DAD 1, Visible Lamp	: OFF	29.9 h

Solvent Description	:
PMP1 , Solvent A	: Water
PMP1 , Solvent B	: MeCN

```
=====
Acq. Operator   : JJ                               Seq. Line :    2
Acq. Instrument : Instrument 1                     Location  : P1-F-01
Injection Date  : 6/18/2021 3:53:20 PM           Inj       :    1
                                                    Inj Volume: 7.5 µl

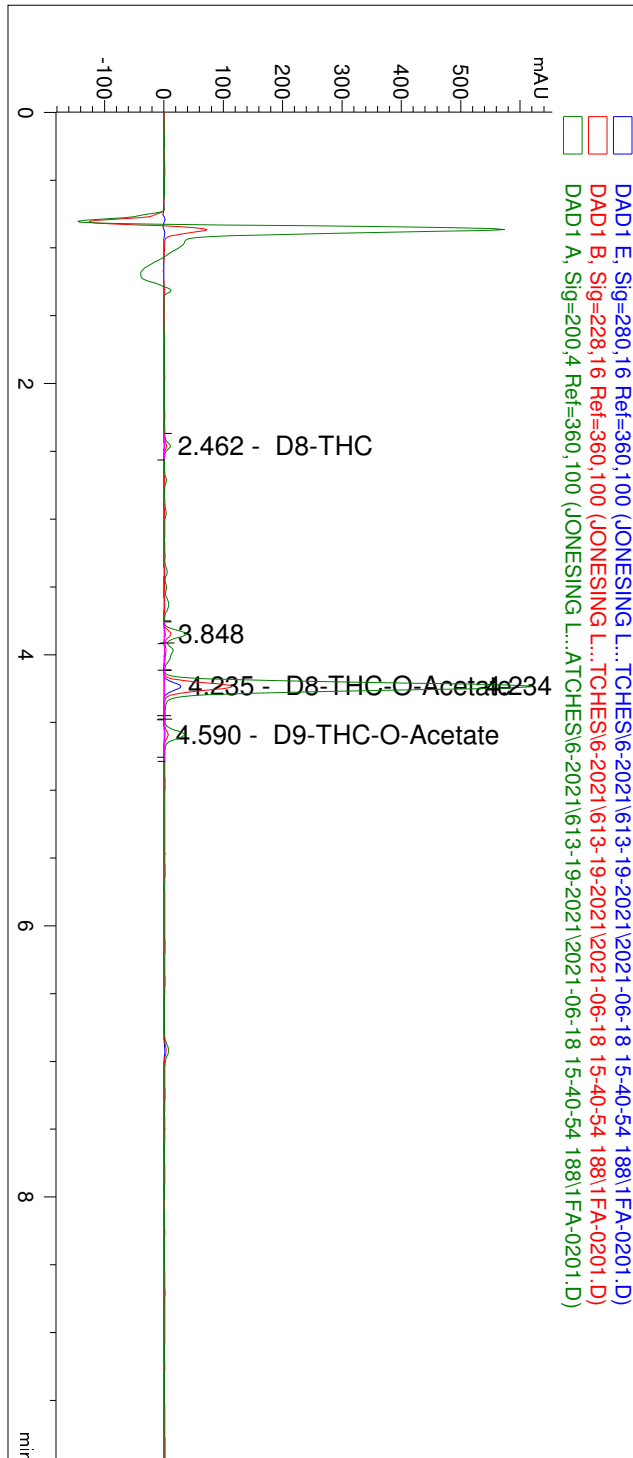
Acq. Method     : C:\CHEM32\1\DATA\JONESING LABS DATA\6_18_21\2021-06-18 15-40-54 188\ACETATES.
                  10MIN.CALIBRATED.M

Last changed    : 6/3/2021 4:26:51 PM by JJ

Analysis Method : C:\CHEM32\1\METHODS\JONESING LABS METHODS\SAMPLE METHODS\ACETATES.10MIN.M
Last changed    : 9/7/2021 4:13:39 PM by CA
                  (modified after loading)

Method Info     : Jonesing Labs calibration acetate method, 10min runs
=====
```

Additional Info : Peak(s) manually integrated



```

=====
Acq. Operator   : JJ                               Seq. Line :    2
Acq. Instrument : Instrument 1                         Location  : P1-F-01
Injection Date  : 6/18/2021 3:53:20 PM           Inj       :    1
                                                    Inj Volume: 7.5 µl
Acq. Method     : C:\CHEM32\1\DATA\JONESING LABS DATA\6_18_21\2021-06-18 15-40-54 188\ACETATES.
                  10MIN.CALIBRATED.M
Last changed    : 6/3/2021 4:26:51 PM by JJ
Analysis Method : C:\CHEM32\1\METHODS\JONESING LABS METHODS\SAMPLE METHODS\ACETATES.10MIN.M
Last changed    : 9/7/2021 4:13:39 PM by CA
                  (modified after loading)
Method Info     : Jonesing Labs calibration acetate method, 10min runs
  
```

Additional Info : Peak(s) manually integrated

```

=====
ESTD Percent Report
=====
  
```

```

Sorted By           :      Retention Time
Calib. Data Modified :      9/7/2021 4:13:38 PM
Multiplier          :      1.0000
Dilution            :      1.0000
Sample Amount       :      250.00000 [ppm]
Do not use Multiplier & Dilution Factor with ISTDs
  
```

```

Signal 1: DAD1 E, Sig=280,16 Ref=360,100
Signal 2: DAD1 B, Sig=228,16 Ref=360,100
Signal 3: DAD1 A, Sig=200,4 Ref=360,100
  
```

RetTime [min]	Sig	Type	Area [mAU*s]	Amt/Area	Amount %	Grp	Name
1.262	1		-	-	-		CBDV
1.596	1		-	-	-		CBD
1.796	1		-	-	-		THCV
2.147	1		-	-	-		CBN
2.236	2		-	-	-		CBDP
2.483	1		-	-	-		D8-THC
2.999	1		-	-	-		CBC
4.128	1		-	-	-		THCP
4.235	1	VB	122.35921	7.27973e-1	35.629694		D8-THC-O-Acetate
4.590	2	BB	31.02560	0.00000	0.000000		D9-THC-O-Acetate

Totals : 50.272589

4 Warnings or Errors :

```

Warning : Calibration warnings (see calibration table listing)
Warning : Calibrated compound(s) not found
Warning : Invalid calibration curve
Warning : Negative results set to zero (cal. curve intercept), (D9-THC-O-Acetate)
  
```

```

=====
Summed Peaks Report
=====
  
```

=====
Acq. Operator : JJ Seq. Line : 2
Acq. Instrument : Instrument 1 Location : P1-F-01
Injection Date : 6/18/2021 3:53:20 PM Inj : 1
Inj Volume : 7.5 µl
Acq. Method : C:\CHEM32\1\DATA\JONESING LABS DATA\6_18_21\2021-06-18 15-40-54 188\ACETATES.
10MIN.CALIBRATED.M
Last changed : 6/3/2021 4:26:51 PM by JJ
Analysis Method : C:\CHEM32\1\METHODS\JONESING LABS METHODS\SAMPLE METHODS\ACETATES.10MIN.M
Last changed : 9/7/2021 4:13:39 PM by CA
(modified after loading)
Method Info : Jonesing Labs calibration acetate method, 10min runs

Additional Info : Peak(s) manually integrated
=====

=====
Final Summed Peaks Report
=====

Name	Total Area [mAU*s]	Amount %
----- ----- -----		
CBDV	0.00000	0.0000
CBD	0.00000	0.0000
THCV	0.00000	0.0000
CBN	0.00000	0.0000
CBDP	0.00000	0.0000
D8-THC	0.00000	0.0000
CBC	0.00000	0.0000
THCP	0.00000	0.0000
D8-THC-O-Acetat	122.35921	35.6297
D9-THC-O-Acetat	31.02560	0.0000
Totals :		35.6297

```
=====
Acq. Operator   : JJ                               Seq. Line :    2
Acq. Instrument : Instrument 1                     Location  : P1-F-01
Injection Date  : 6/18/2021 3:53:20 PM            Inj       :    1
                                                    Inj Volume: 7.5 µl

Acq. Method     : C:\CHEM32\1\DATA\JONESING LABS DATA\6_18_21\2021-06-18 15-40-54 188\ACETATES.
                  10MIN.CALIBRATED.M

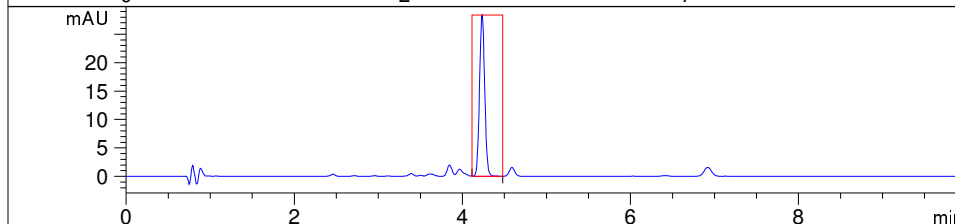
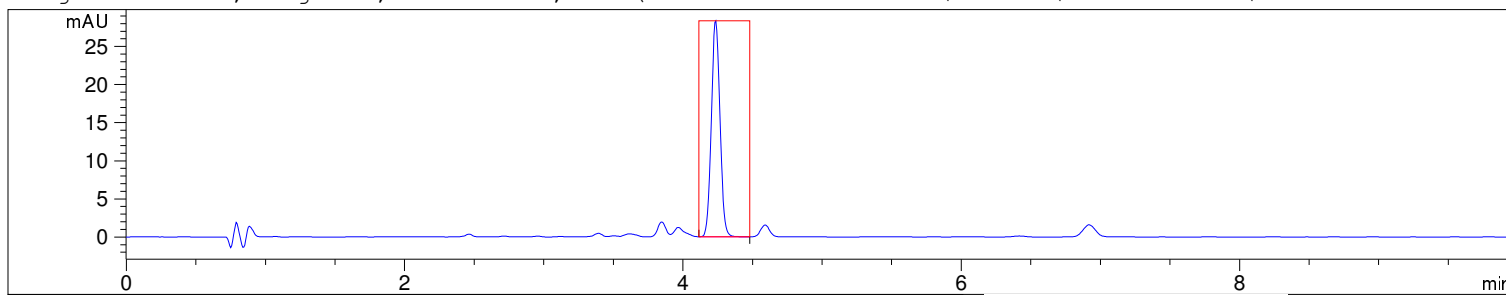
Last changed    : 6/3/2021 4:26:51 PM by JJ

Analysis Method : C:\CHEM32\1\METHODS\JONESING LABS METHODS\SAMPLE METHODS\ACETATES.10MIN.M
Last changed    : 9/7/2021 4:13:39 PM by CA
                  (modified after loading)

Method Info     : Jonesing Labs calibration acetate method, 10min runs
=====
```

Additional Info : Peak(s) manually integrated

Signal DAD1 E, Sig=280,16 Ref=360,100 (JONESING L...TCHES\6-2021\613-19-2021\2021-06-18 15-40-54



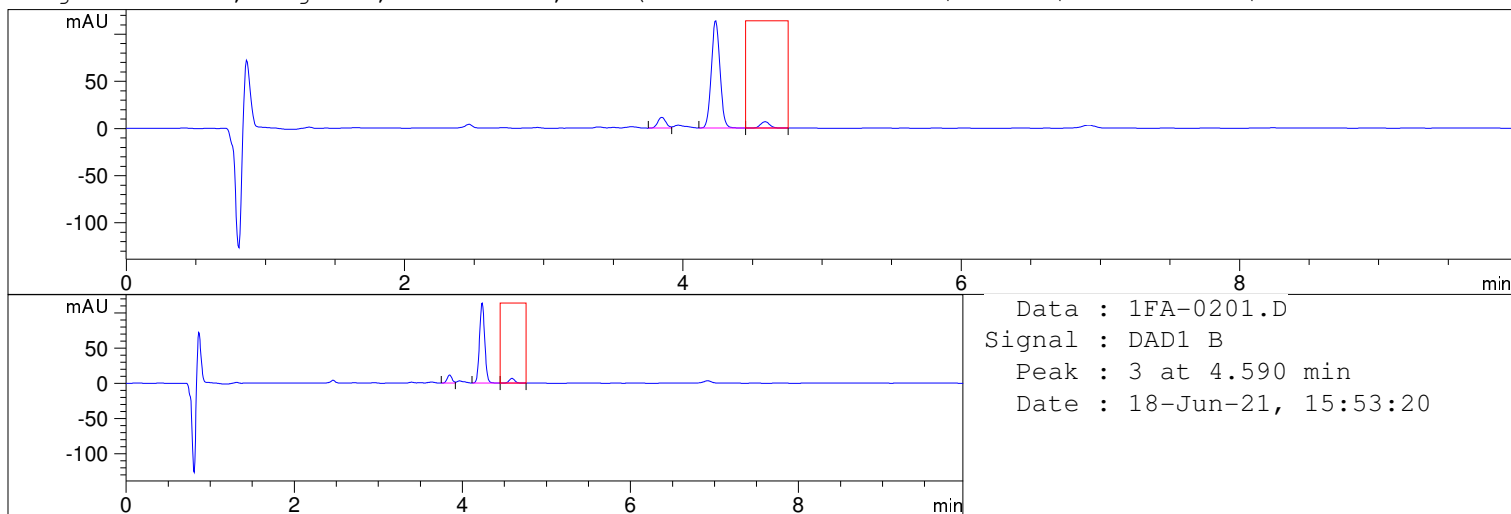
Data : 1FA-0201.D
Signal : DAD1 E
Peak : 1 at 4.235 min
Date : 18-Jun-21, 15:53:20

!!!!!!!!!!!!!!!!!!!!!!!!!!!!!!!!!!!!
!! No spectral data found !!
!!!!!!!!!!!!!!!!!!!!!!!!!!!!!!!!!!!!

```
=====
Acq. Operator   : JJ                               Seq. Line :    2
Acq. Instrument : Instrument 1                     Location  : P1-F-01
Injection Date  : 6/18/2021 3:53:20 PM           Inj       :    1
                                                Inj Volume: 7.5 µl
Acq. Method     : C:\CHEM32\1\DATA\JONESING LABS DATA\6_18_21\2021-06-18 15-40-54 188\ACETATES.
                  10MIN.CALIBRATED.M
Last changed    : 6/3/2021 4:26:51 PM by JJ
Analysis Method : C:\CHEM32\1\METHODS\JONESING LABS METHODS\SAMPLE METHODS\ACETATES.10MIN.M
Last changed    : 9/7/2021 4:13:39 PM by CA
                  (modified after loading)
Method Info     : Jonesing Labs calibration acetate method, 10min runs
=====
```

Additional Info : Peak(s) manually integrated

Signal DAD1 B, Sig=228,16 Ref=360,100 (JONESING L...TCHES\6-2021\613-19-2021\2021-06-18 15-40-54



!!!!!!!!!!!!!!!!!!!!!!!!!!!!!!!!!!!!
!! No spectral data found !!

*** End of Report ***